

**OBJECTIVES :**

- Enables display, recording and study of all engine, ABS, air conditioning parameters, on a PC and compatible type computer.
- In the EXXOTEST training concept, REFLET establishes the link between theory and practice, between the training modules and the vehicle.

**PRESENTATION :**

The acquisition software is composed of an interface unit, which is connected to a PCI board installed in a PC (PIII 600Mhz, 128 Mb minimum).

The software graphic interface enables acquisition of measurements and processing of the data recorded.

Each group or user group is able to create measurement screens for himself or themselves, and quite simply, with a choice of the signals to be displayed.

**CLASSES CONCERNED**

BEP M.A.  
BACPRO M.V.A.  
BAC STI – Motor-driven systems option.  
BTS M.A.V.A.

**PRACTICAL WORK  
AND CORRECTIONS**

Enables practical work on the training modules and on vehicles

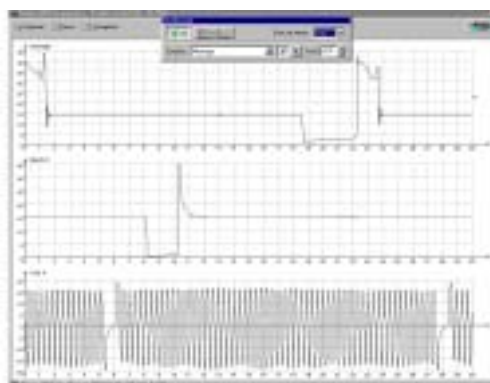
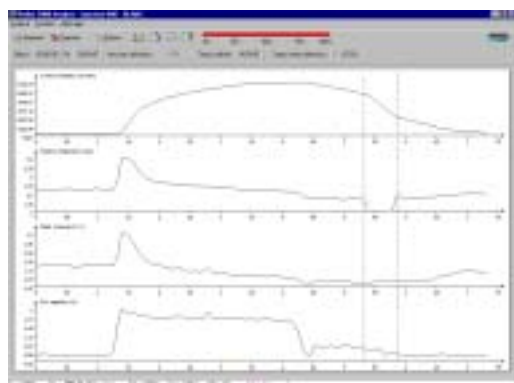
## USE :

### • Recording and detailed display of events function:

You may change the acquisition rate; read back signals at fast or normal speed, or step by step with video recorder type functions; display 6 complete measurements as required from those recorded, or observe an enlarge period in order to study a particular detail.

### • Importing, Exporting, Printing:

You may export data into a text file and process them with your spreadsheet; export and import screens and measurements from another computer using the REFLET of VISU software; print all curves and data (in this case, the operative and the measurement conditions are recorded in the document header).



## CHARACTERISTICS :

- Management of the different functioning modes (injection, air conditioning, ABS, laboratory, etc.), enabling adaptation of the system to the signals to be displayed and to the way of calculating them.
- *These functioning modes are upgradable and are regularly updated.*
- Configuration pre-defined or to-measure enabling read-out of signals on different types of display and adaptation to the constructors' configurations.
- 4-track oscilloscope with automatic or manual time base, with synchronisation on analogue or digital channels.
- Automatic signal analysis (cyclic ratio, injection time, etc.).
- Recording time: up to 90 minutes continuous.
- High-performance access rights management to prevent mishandling by students.

References	Functions	Connections	Accessories
REFLET	Acquisition system	12 or 24 V on vehicle	1 CR-A 32 V connection unit 1 PC ATR987 board, PCI format 1 software running in WINDOWS 95 or 98 and 1 user instructions
CL500N + Kit (optional)	Physical measurement Pressure, flow, Air conditioning	12V on vehicle then	Basic kit, then depending on use, AIR CON, FLOW, LPG and PRESSURE kit.

**-- www.exxotest.com -- www.exxotest.com -- www.exxotest.com --**

This equipment is CE certified. It is supplied with an inspection report and a certificate of conformity.

**WARRANTY: 2 years Parts and Labour**

**ANNECY ELECTRONIQUE**

Z.A. Les Marais - BP157 - F74410 SAINT-JORIOZ  
Tel: 33/0 450 68 90 65 Fax: 33/0 450 68 58 93

VISU2000W	Display of records made with REFLET2000W	None	1 software running in WINDOWS 95 or 98 1 user instructions
MI25A (option)	Current measurement 0 to 25 A and 0 to 500A	On REFLET2000W CR	Cable for connection to fuse and 4 mm socket, user instructions