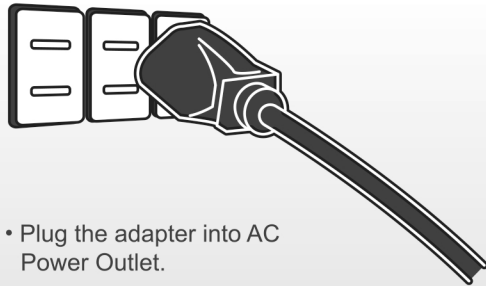


PS-M2 Vehicle Stabilizer Quick Start

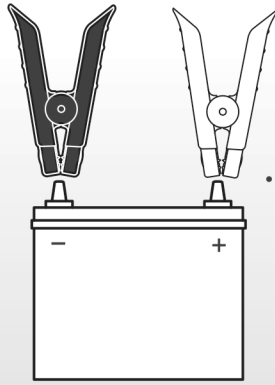
How to Start PS-M2 Operation

① Connect with Power Outlet



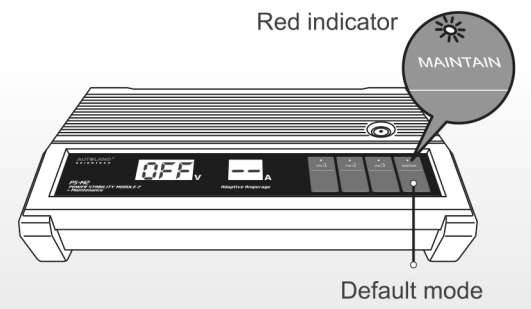
- Plug the adapter into AC Power Outlet.

② Connect to Vehicle Battery



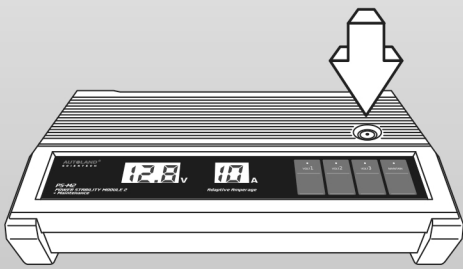
- First clamp the red positive cable to the intended vehicle's positive battery terminal (marked as "+"). Then, clamp the black negative cable to the intended vehicle's negative battery terminal (marked as "-").

③ Powered On but not Activated



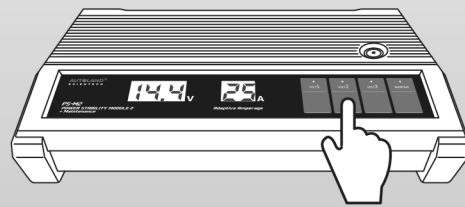
- The default mode will be MAINTAIN mode.
- When not activated, the voltage output status is OFF.

④ Activate Power Output



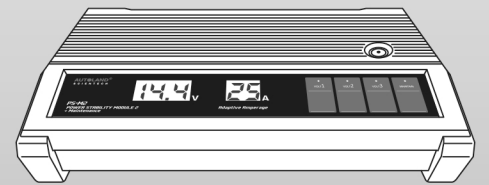
- Press power key on top of the PS-M2. After 3 beeps, the blue LED indicates output action (MAINTAIN mode). The screen shows 12.8V, 10A (may slightly differ depending on the vehicle status).

⑤ Select Output Mode



- Select the output mode to be used according to the vehicle equipment.
i.e. VOLT2: 14.4V
Note: the voltage of various output modes are as following
VOLT1: 15V VOLT2: 14.4V
VOLT3: 13.8V MAINTAIN: 12.8V
For more information, please see the description below.

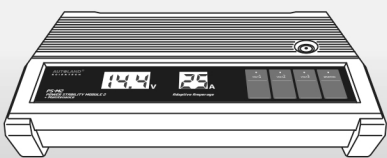
⑥ Device in Service



- PS-M2 will continuously provide stable 14.4V. The current value will be actively adjusted with current consumption of the vehicle.

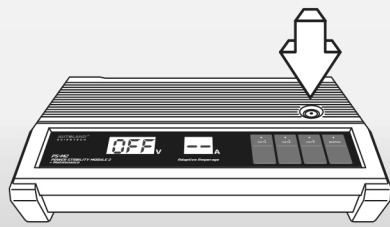
How to End PS-M2 Operation

① Device in Service



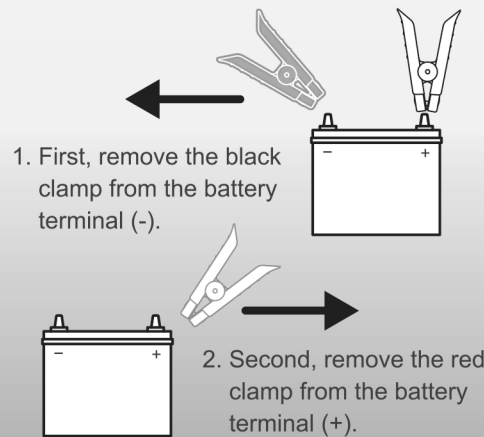
- PS-M2 will continuously provide stable 14.4V, as the current value will fluctuate along with current consumption of the vehicle.

② Press Power Button



- Press power button on top of the PS-M2. After 1 beep, the blue LED indicator for Output Action will turn off. The screen shows OFF -- (not activated status).

③ Remove Clamps from The Vehicle



1. First, remove the black clamp from the battery terminal (-).
2. Second, remove the red clamp from the battery terminal (+).

④ Disconnect from Power Outlet



- Remove adapter from AC Power Outlet.

Specification

1. Adaptive current output: 0~70A
2. Maximum output current: 72A in 13.8V mode.
3. When maximum output current is exceeded (70~99A), the system will automatically switch to "pulse" charging mode.
4. In maintenance mode, the voltage output will be fixed at 12.8V, and the current will be dynamic current output to ensure the battery life.

Protection

1. Heat dissipation is managed by robust heat sink and convection design to ensure the efficiency of the PS-M2.
2. In the case of incorrect connection or in the event of a short. Unit is equipped with reverse polarity protection and short circuit protection prevent damage to electrical damage.

Output Mode Description

- VOLT1: 15V Snow mode, provides large voltage output
- VOLT2: 14.4V Suitable for AGM/VRLA/GEL battery types
- VOLT3: 13.8V Suitable for Lead-Acid battery type
- MAINTAIN: 12.8V Battery maintenance mode

Attention

Warning buzzer and lights are listed below, please follow instructions to operate PS-M2.

1. → Screen flashes + "Beep" alarming sound
• Not activated mode, please follow the normal operation and use.
2. → Screen flashes + "Beep" short and repetitive sound
• Clamps are connect with wrong terminals.
3. → Screen flashes + "Beep" short and repetitive sound
• After entering the pre-charging mode, it will automatically switch to the normal mode after about 30 sec to 1 min. The charging time will vary depending on the battery status on the car.
4. → Screen flashes + "Beep" short and repetitive sound
• Current overload, system shuts down automatically. Please remove the PS-M2 from the vehicle and pull the adapter from AC power outlet. Start operation procedure from the beginning.

Instruction of clip for new Mercedes-Benz models.

